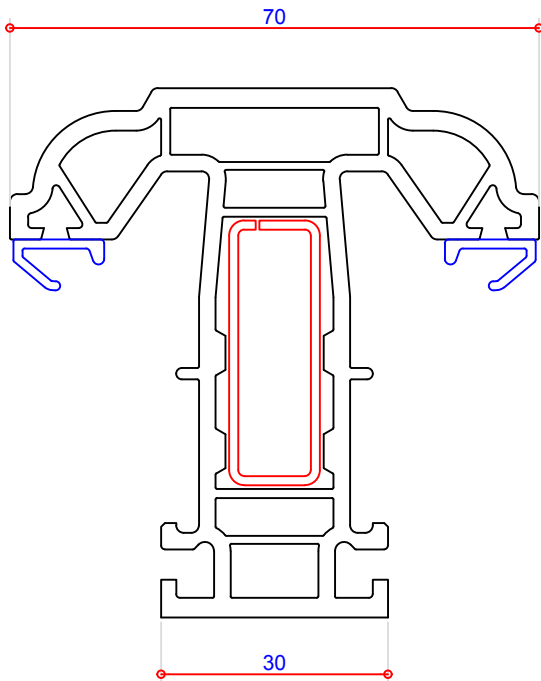
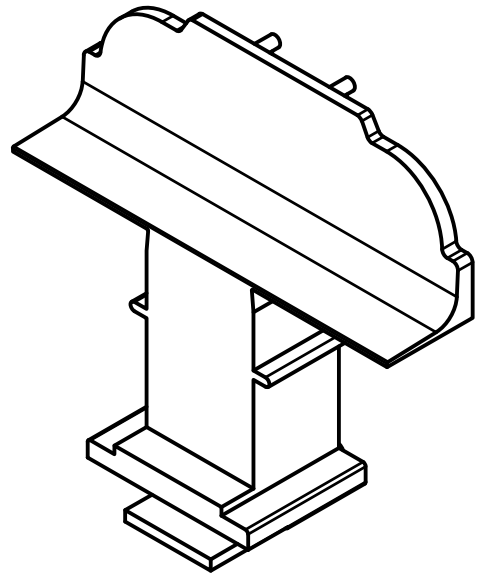


**703810 (P10527)**  
Flush Sash  
Steel L Section 713226 (S00226)  
Prepped Steel L 713227 (S00227)



**702533 (P10533)**  
70mm T Transom  
Steel Box 713187  
Steel Box 713155



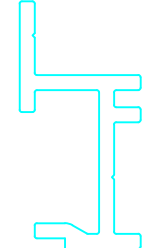
**109040**  
French Mullion End Cap  
For use with 702533 only  
(White/Brown/Caramel)



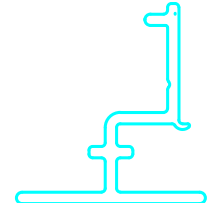
**112380**  
Bead Groove Infill  
(Black/White)



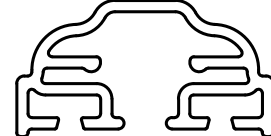
**712043**  
Flush Sash Seal



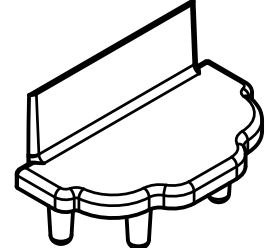
**104395**  
French Mullion Adapter



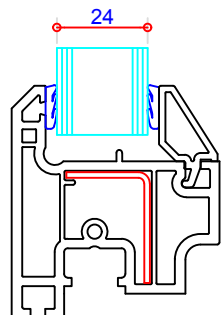
**104495**  
Slim Sightline Mullion



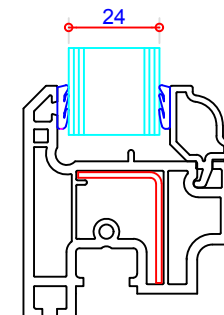
**109130**  
Slim Sightline Mullion Cover



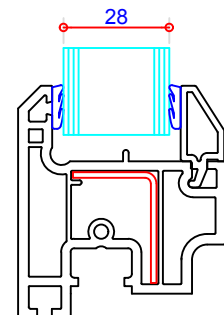
**109131**  
Slim Sightline Mullion End Cap



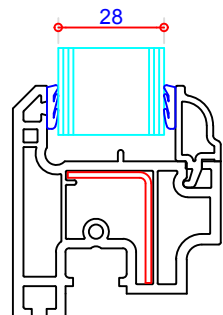
**707429 (P10429)**  
24mm Glazing Bead



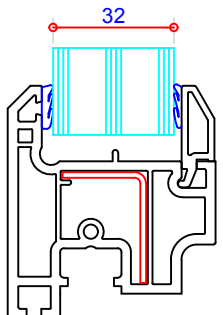
**707431 (P10431)**  
24mm Glazing Bead



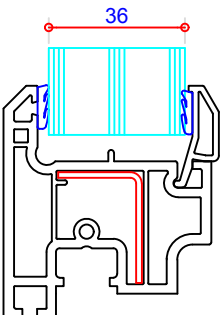
**707427 (P10427)**  
28mm Glazing Bead



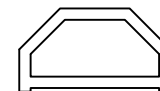
**707432 (P10432)**  
28mm Glazing Bead



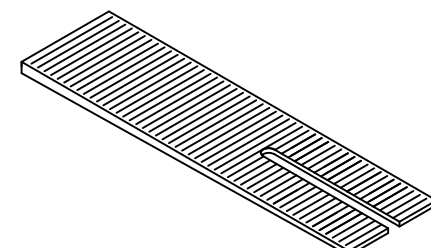
**707426 (P10426)**  
32mm Glazing Bead



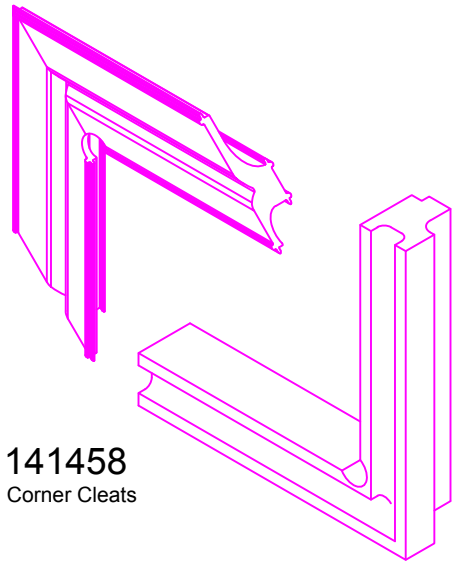
**707437 (P10437)**  
36mm Glazing Bead



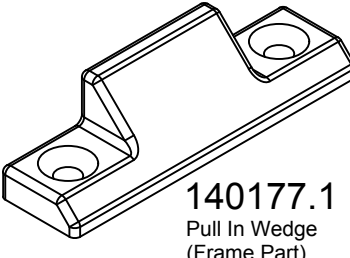
**709824 (P10193)**  
Georgian Bar



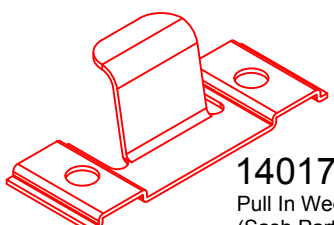
**709213 (M00213)**  
Clip In Packer (White)



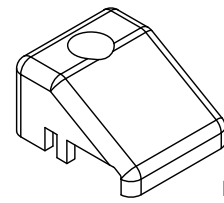
**141458**  
Corner Cleats



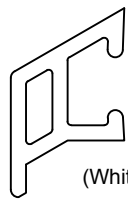
**140177.1**  
Pull In Wedge  
(Frame Part)



**140177.2**  
Pull In Wedge  
(Sash Part)



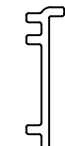
**109029**  
Run Up Block



**109030**  
Weather Bar  
109140 End Cap  
(White/Brown/Caramel)



**744163 (H00163)**  
Weather Bar Screw  
(Nipple Screw)



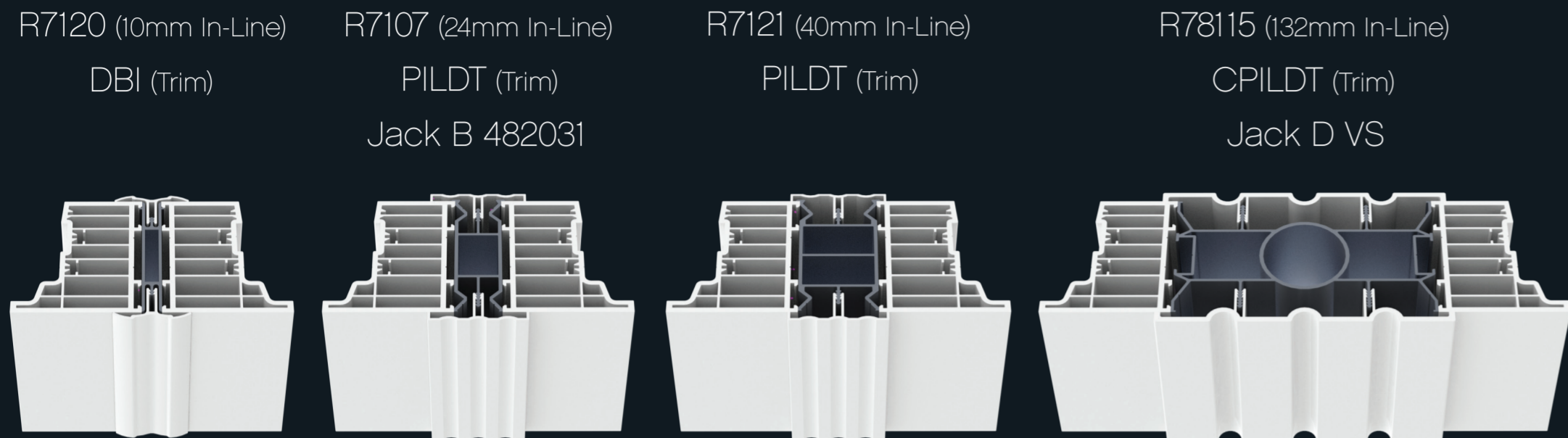
**109103**  
Matrix FS Flush Sash Hinge Packer

- KEY:**
- PVC Profile
  - Gasket
  - Steel
  - Aluminium

DO NOT SCALE the drawings shown are visual representations only. VEKA PLC has the right to alter the designs, specification & descriptions without prior notice as part of our policy of continuous development and improvements.

The VEKA Flush Sash profile and associated parts are designed to function with the Matrix Fully Sculptured profile suite. For outerframe manufacturing details please refer to the relevant manual.

Residence 7 Frame Coupling



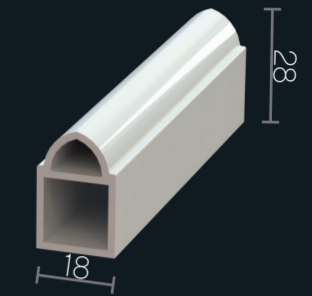
Mechanical Joints

R306 (LH, RH pair for R003)

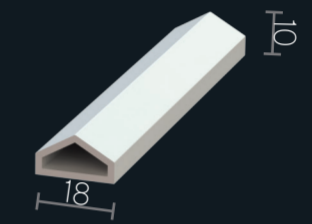


Georgian Bar

R201 (Use internally with all Sashes)



R202 (Use externally with all Sashes)

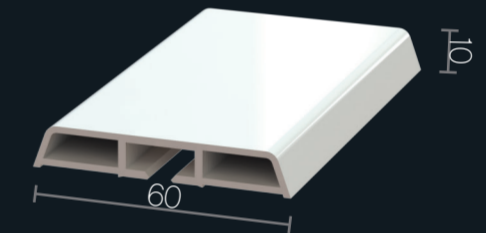


R693 (Nylon Fabrication Blocks for R306)

R346 (LH, RH pair for R003FD)



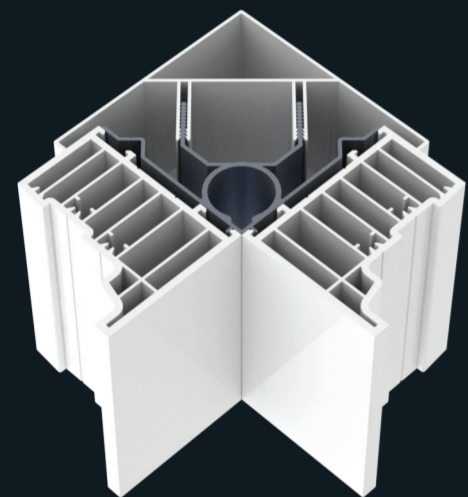
R215 (Use with all Sashes)



R78108 (90° Corner Post)

90SQ (Square Corner Post Cover)

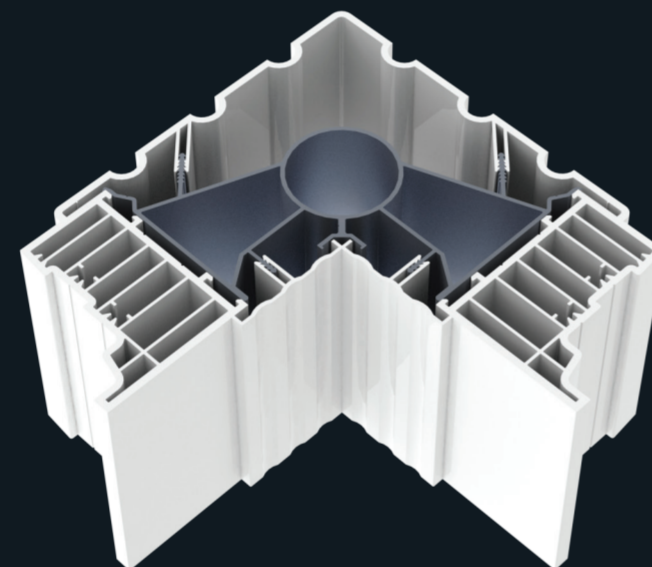
Jack D WWL142



R7108 (90° Chunky Corner Post)

VS90 (Chunky Corner Post Cover)

Jack D VS



R696 (Nylon Fabrication Blocks)

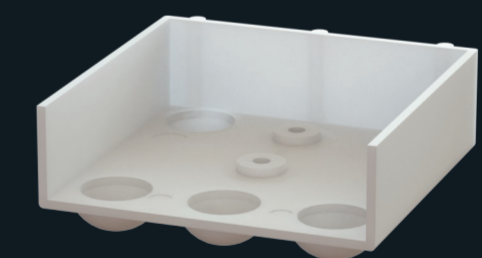
R510 (Use with R003FD)



Corner Protectors

7525CP (Use with R7002)

R302 (Use with R002, RS002, R010)

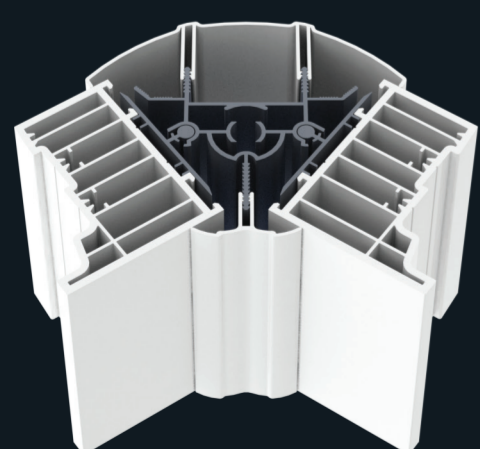


WWL121 (94° - 125° Variable Baypost)

482104 (Frame Adapter)

DBI, DBO120 (Internal, External Trim)

Jack C

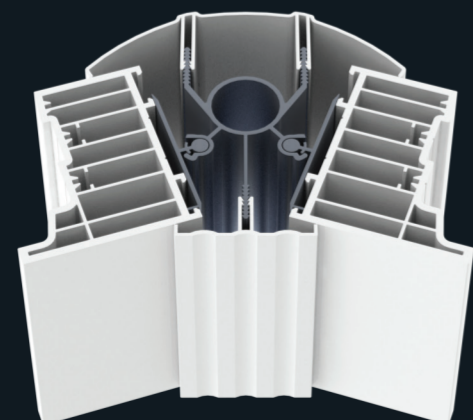


R7109 (120° - 165° Variable Baypost)

482028 (Frame Adapter)

PILDT, DBO120 (Internal, External Trim)

Jack D WWL142

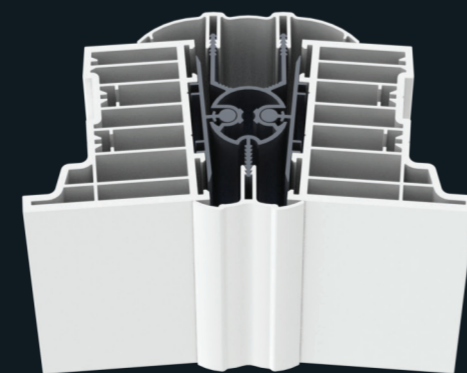


482055 (160° - 180° Variable Baypost)

482104 (Frame Adapter)

DBI, DBO (Internal, External Trim)

Jack C 482055



R319 (LH, RH pair for R002, R7002, RS002)



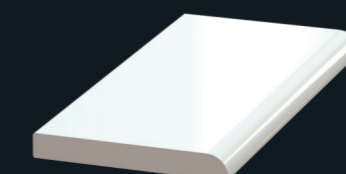
R303 (Use with all Frames)



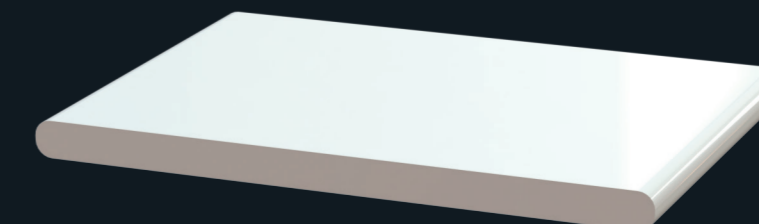
PVC Trims

R207 (45mm Architrave)

FTA (Window Widgets)



R211 (150mm X 9mm Soft Board)



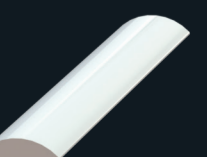
R212 (25mm D Mould)

FTD (Window Widgets)



R213 (175mm Quadrant)

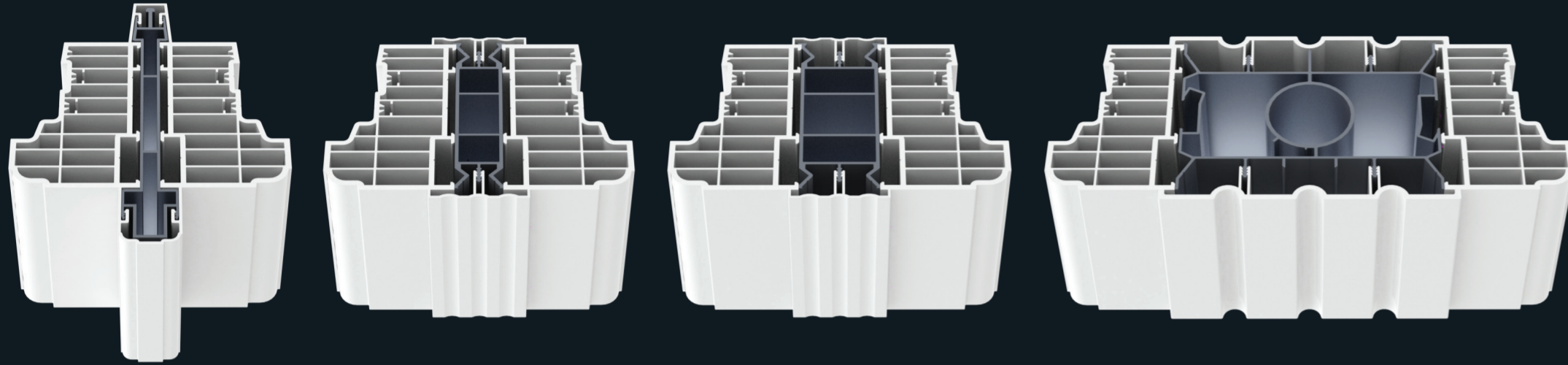
FTQ (Window Widgets)





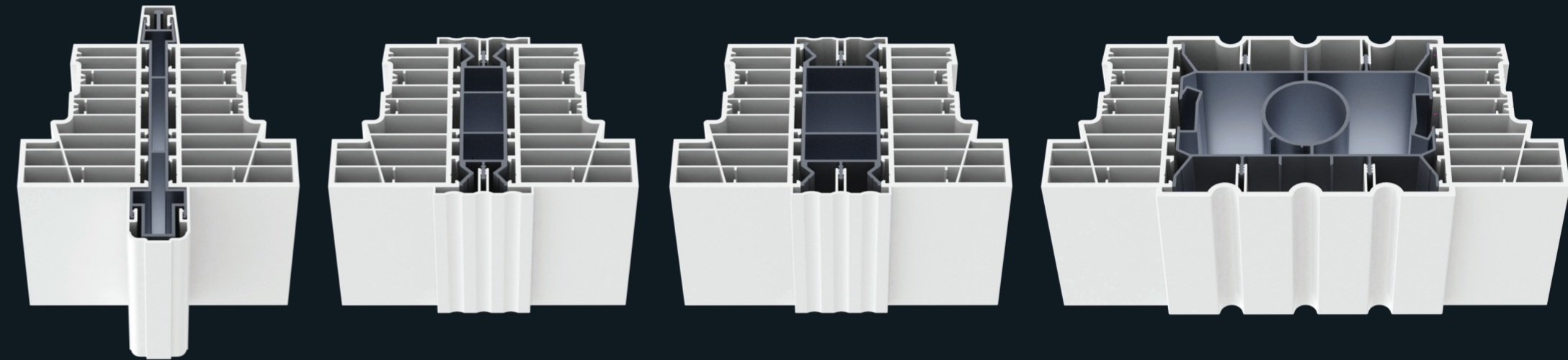
Residence 9 Frame Coupling

- R120 (10mm In-Line)
- R204 (Internal Trim)
- R203 (External Trim)
- R107 (24mm In-Line)
- PILDT (Trim)
- Jack B 482031
- R9121 (40mm In-Line)
- PILDT (Trim)
- R115 (132mm In-Line)
- CPILDT (Trim)
- Jack D VS

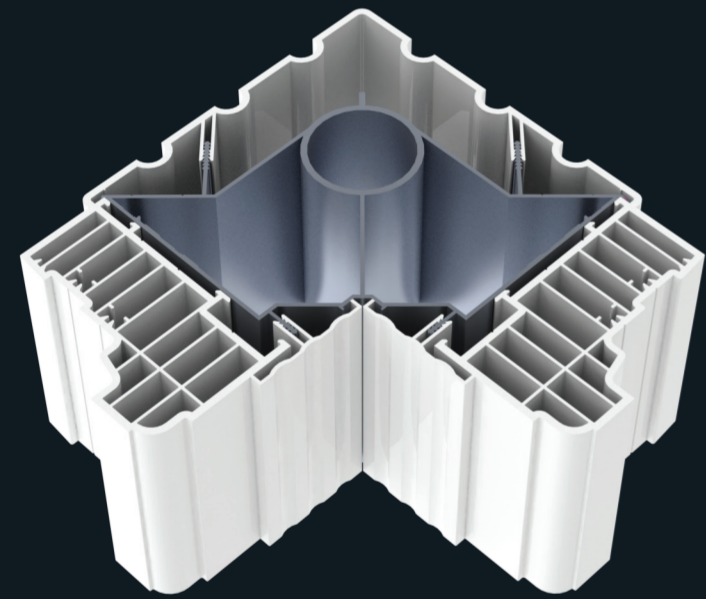


Residence<sup>2</sup> Frame Coupling

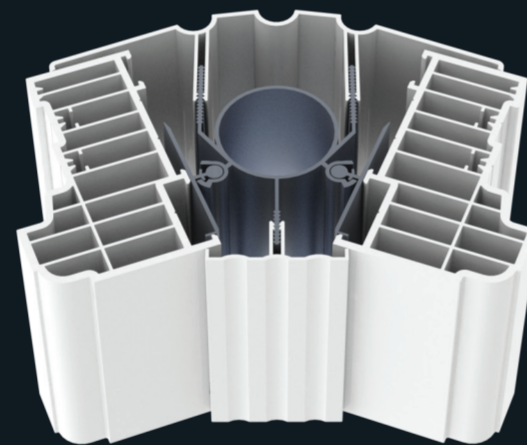
- R120 (10mm In-Line)
- R204 (Internal Trim)
- R203 (External Trim)
- R107 (24mm In-Line)
- PILDT (Trim)
- Jack B 482031
- R9121 (40mm In-Line)
- PILDT (Trim)
- R115 (132mm In-Line)
- CPILDT (Trim)
- Jack D VS



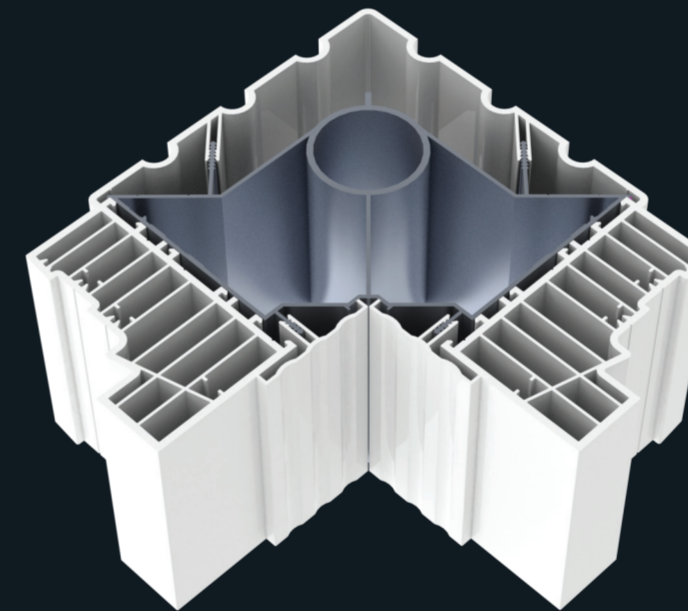
- R108 (90° Chunky Corner Post)
- VS90 (Chunky Corner Post Cover)
- Jack D VS



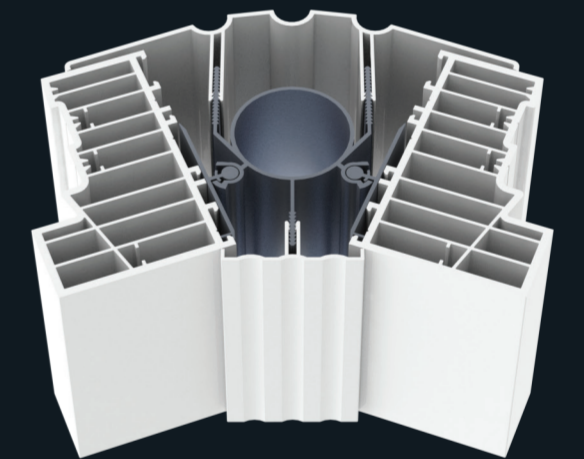
- R109 (120° - 165° Variable Baypost)
- 482028 (Frame Adapter)
- PILDT, VSO (Internal, External Trim)
- Jack D VS



- R108 (90° Chunky Corner Post)
- VS90 (Chunky Corner Post Cover)
- Jack D VS

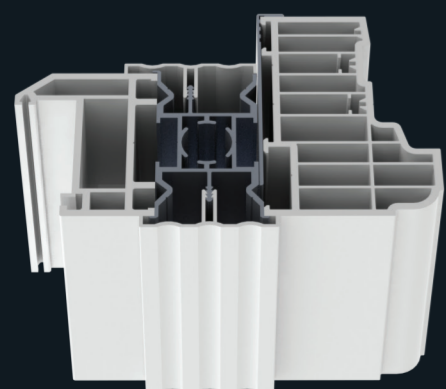


- R109 (120° - 165° Variable Baypost)
- 482028 (Frame Adapter)
- PILDT, VSO (Internal, External Trim)
- Jack D VS



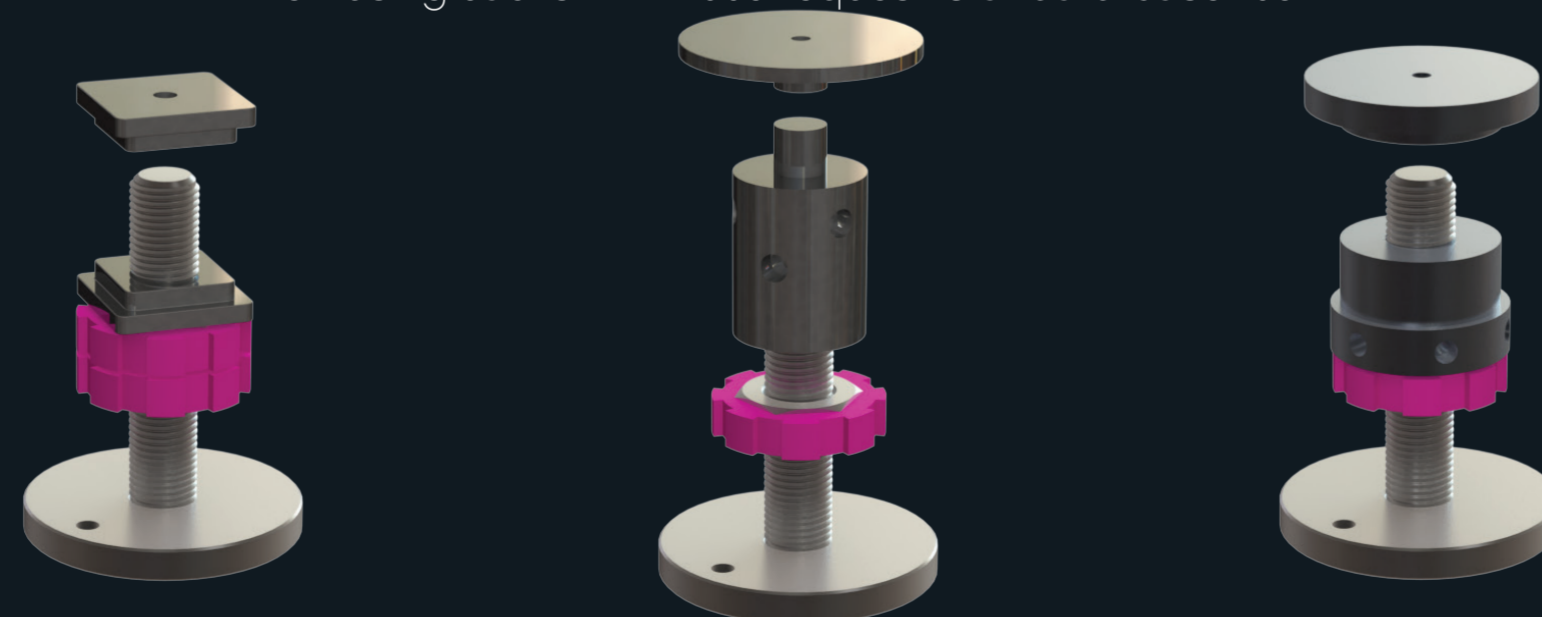
Coupling to 70mm Systems

- VSDC (24mm In-Line)
- VSDRC (Rebate Cover for Residence Collection Frames)
- PILDT (Trim)



Jacks

- Jack B (Baypole Jack)
- Jack C (Baypole Jack)
- Jack D (Baypole Jack)
- When using Jacks with R009 request 'Standard base 105mm'



Plinths

- WWL145 (90° Plinth)
- Available at 35mm, 75mm and 200mm

